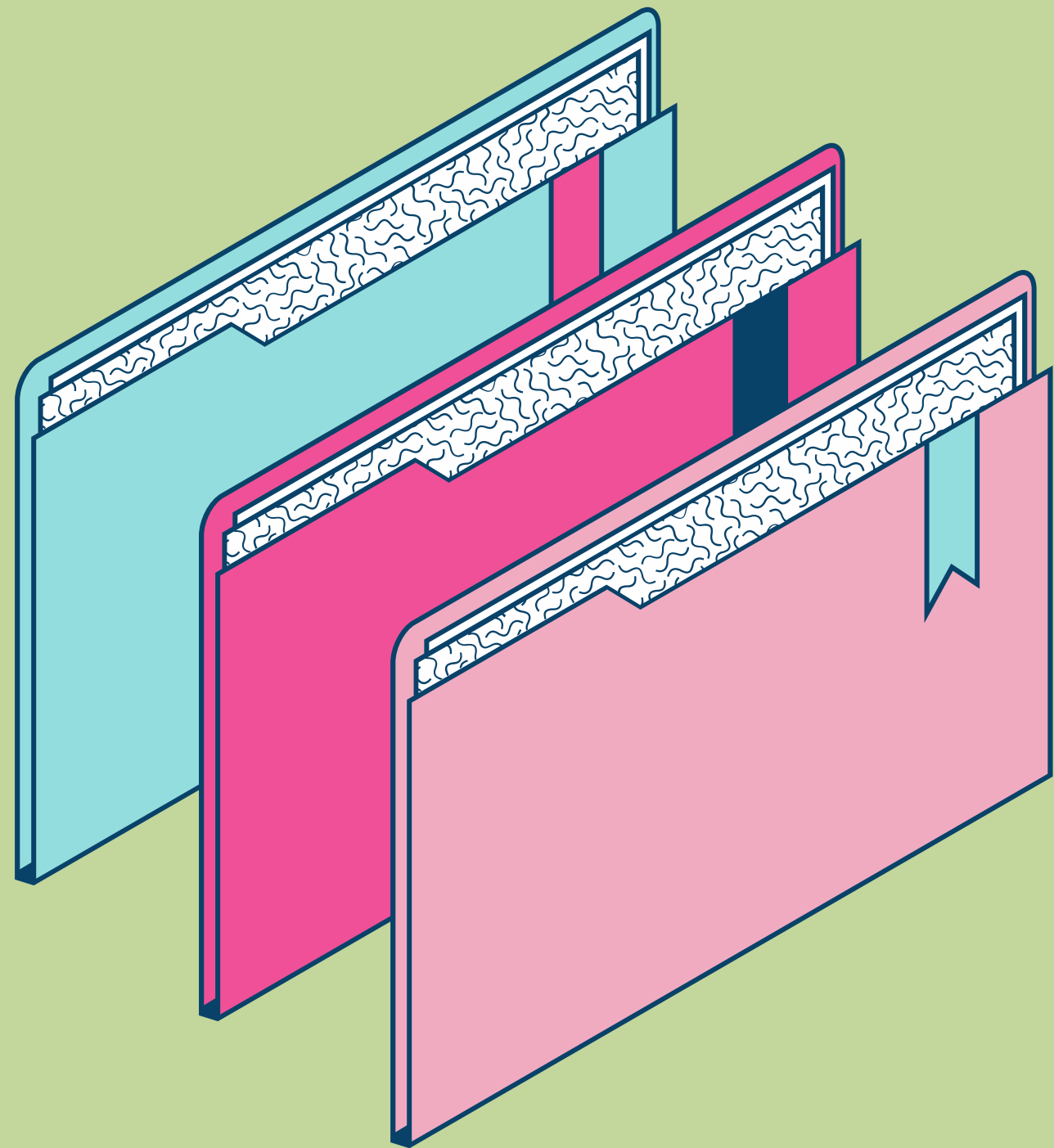




# Connected Together We're Better Together

Caitlin Lockard, Connected Together Coordinator





# Agenda

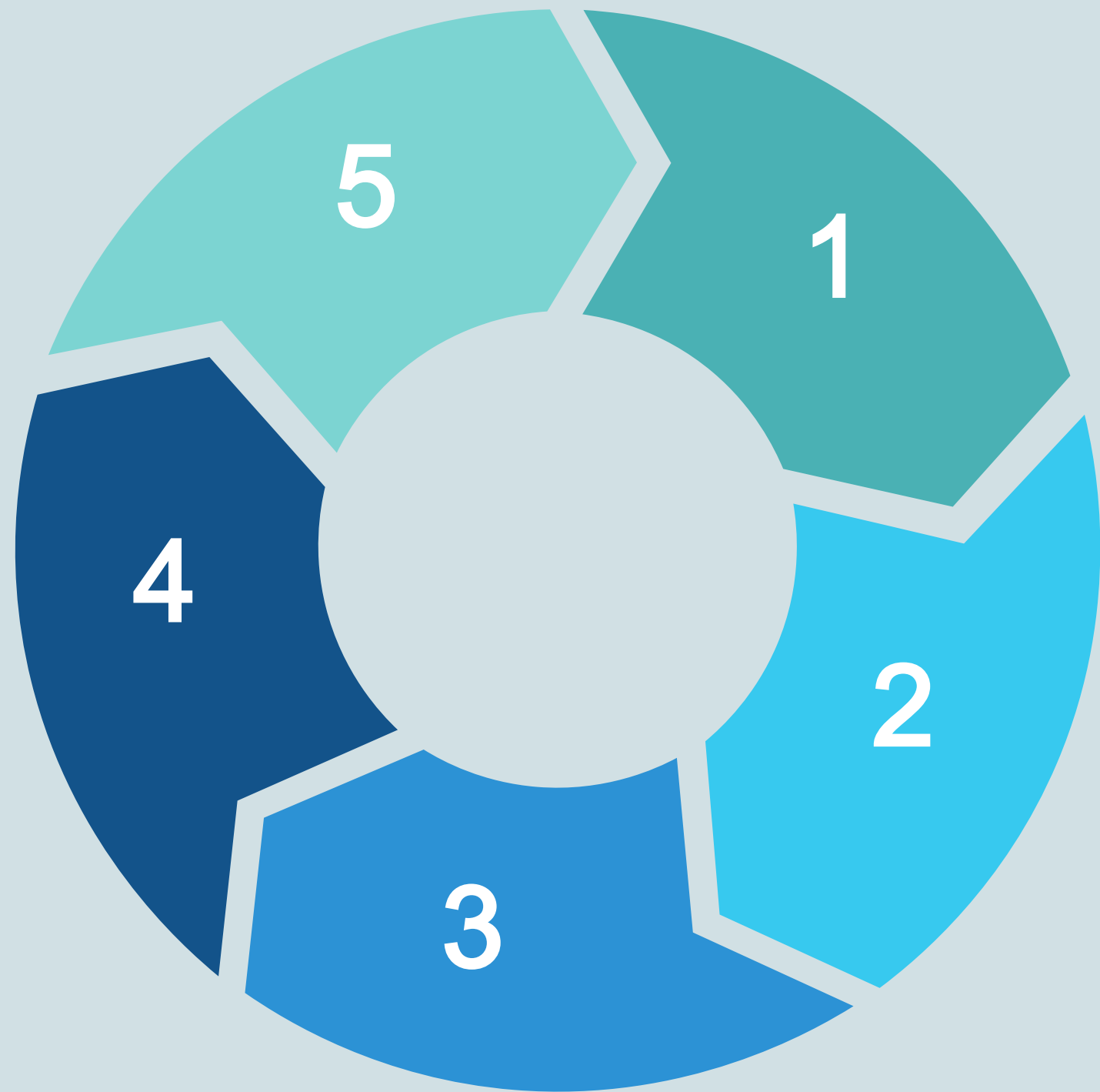
WALK AWAY FROM TODAY KNOWING...

- Overview of the CTC process
- What CTC looks like in Lebanon County
- How community members have used CTC
- Our plan moving forward

# An Overview of the Process



# 5 Phases of Communities That Care



## Stage 1: Getting Started

Identify diverse community leaders to champion this process.

## Stage 2: Getting Organized

Learn about the prevention process to form a vision statement, workgroups, and timeline for process.

## Stage 3: Develop a Community Profile

Identify community strengths, weaknesses, and assess all data available for a resource assessment.

## Stage 4: Create a Community Action Plan

Community level roadmap for how to reduce risk factors and enhance protective factors.

## Stage 5: Implement and Evaluate

Implement programs and policies, monitor the effectiveness, and track results.

# How Does Lebanon County Measure Up?

On average, less than 40% of youth in Lebanon County attending grades 8<sup>th</sup>-12<sup>th</sup> feel that school will have significance later in life.

There is a significant feeling of disconnection in Lebanon County, and a lack of social connection both in school and community.

---

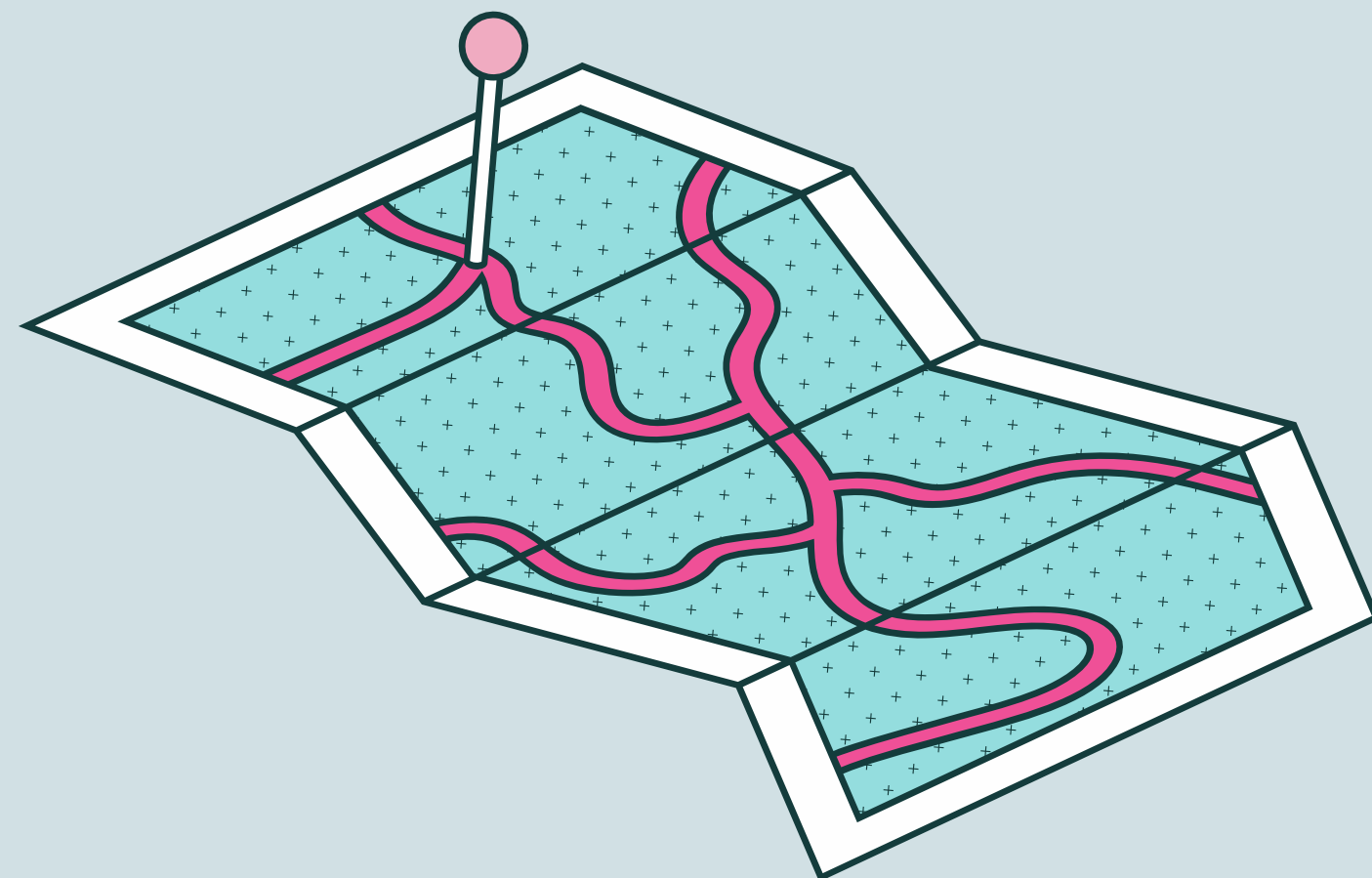
The majority, 60%, of respondents' who identified as a gender other than male or female in 10th grade do not feel attached to their family.

Youth are facing poor family connections, including family violence and child abuse. There are also decreased opportunities for mentorship.

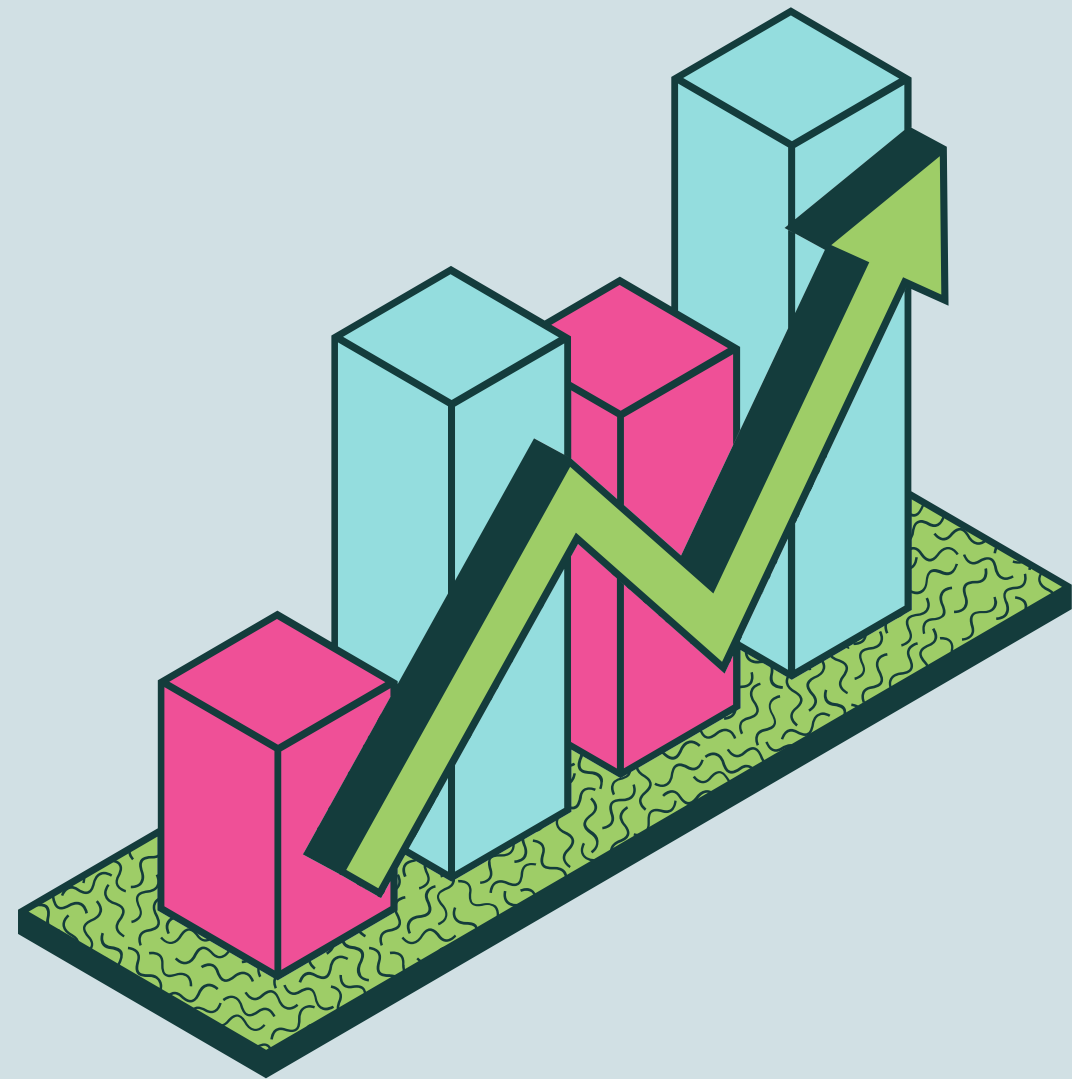
---

Within the last year, over 25% of all 'Males', over 40% of all 'Females', and 54.2% of 'Others' in the 10th grade report being depressed.

Factors leading to poor mental health in youth include bullying, lack of access to trustworthy adults, and lack of accessible and low-cost positive activities.



# What Can We Do About It?



The majority, 50% or higher, of male and female students from grade 6th through 12<sup>th</sup> grade feel attached to their family.

Youth who have a higher levels of attachment to their families tend to have a support system and tend to receive praise/encouragement for pro-social behaviors and are more likely to have opportunities to participate in their community .

---

64.8% of 8th grade males report being rewarded for prosocial involvement from their parents. 69.6% of youth that identify as neither 'Male' or 'Female' are not being rewarded for prosocial involvement.

The CTC model shows us that when youth are rewarded and supported for being involved, they are more likely to feel attached to their families and their communities, increasing the likelihood they will experience positive outcomes long term.

# What is Social Development Strategy?



**For every \$1  
invested in CTC,  
\$11.14 is  
returned to the  
community.**

**What has this looked like?**







## CVP, VIP, and Wellspan Grants

Community Violence Prevention Grants – using the CTC process to bring \$747,849 into the community to address community violence long term, the CTC process, and trained 11 local providers in EMDR training & funded MTT

---

## Mobile Trauma Therapy

Free trauma therapy service that allows for services to meet a client where they are with no previous evaluation necessary.

---

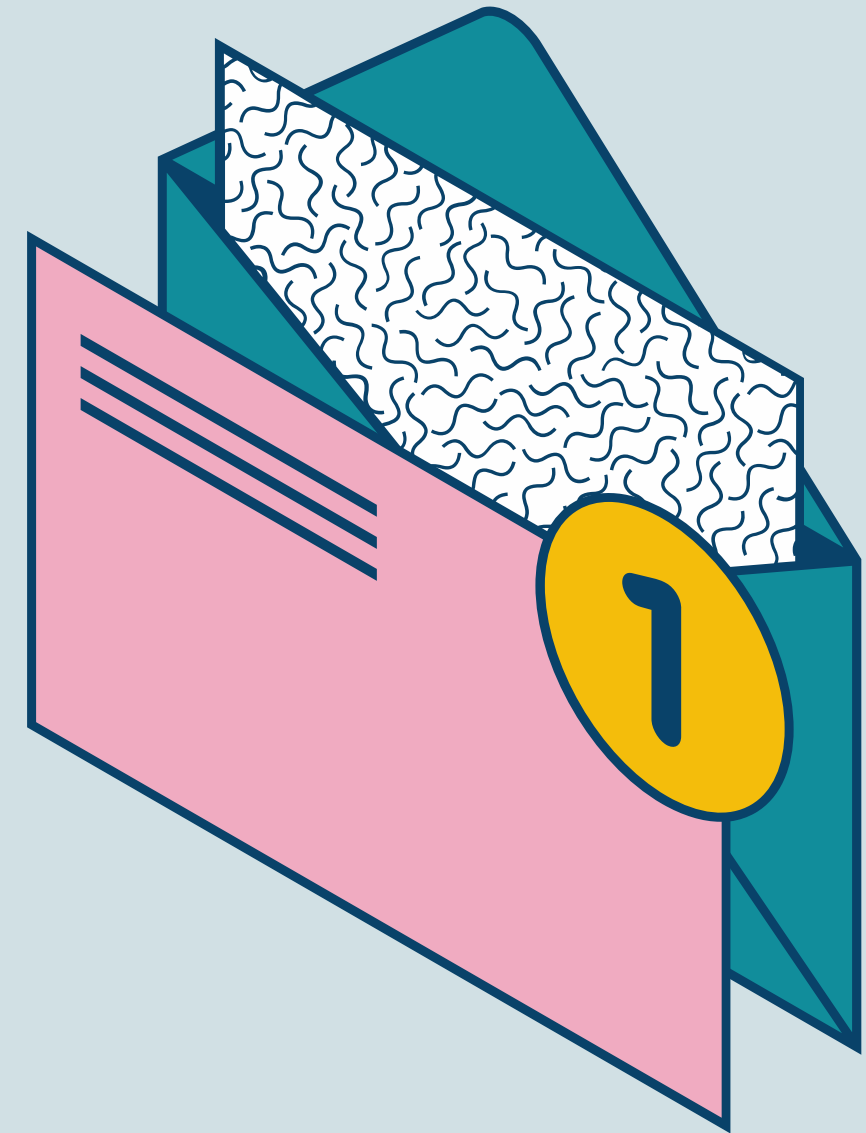
## Trauma Sensitive Certification

Lakeside Global Institute Trauma-Sensitive course for professionals.

# What's Next?

## EXPECT FROM CONNECTED TOGETHER:

- Lakeside Global Institute Training of Trainers
- Renewing Mobile Trauma Therapy funding
- Providing comprehensive training package with clearance assistance to Lebanon stakeholders
- Release Community Action Plan by the end of 2024



# Digital Handouts

[Positive Social Norming Campaign](#)

[Fact Campaign for Agencies](#)

[One-sheet](#)

# Questions?

[clockard@sarccheals.org](mailto:clockard@sarccheals.org)

